

# Arboretum Area Committee Report

Unofficial June 2013 Data

# Ward Priorities

Theme	Priorities	Key Actions	Outcome – April- June 2013	Lead
<b>Safer</b>	Reduce Anti Social Behaviour relating to Alcohol/drug use (on street.)	Increase the number of confiscations' Reduce drug/alcohol use on all of the local Park.	94 x recorded Alcohol Confiscations by Radford Road Community Protection Officers in first quarter  Extended Designated Public Places Order to come into force in August 2013.	Police/ Community Protection
<b>Neighbourhoods</b>	Reduce Bins on street. Reduce Fly Tips & Dog Fowling.	Increase enforcement action. Increasing education of local residents.	50 x Section 46 Environmental Protection Act enforcement notices issued re bins in Arboretum in first quarter compared with 25 last year. Major work will commence upon student return.  13 dog fouling operations conducted in Arboretum by Community Protection in first quarter	Community Protection City Services
<b>Families</b>	Provide play & youth activities increase out reach work.	We plan to do an additional street session each week, and strive to support local residents with local initiatives within the ward	Hyson Green Youth Club – Football/ Basketball – 1,112 Males & 446 Females (13-18yrs). Deaf Club- Males 15 & Females 51 (13-25 yrs) Street Sessions Males 157 & Females 76 ( All Ward) Targeted Projects Males 29 & Females 43	Central Family & Community Team



# Community Engagement

## Ward Walks

Area/Estate	Date/Time	Meeting Point
Arboretum Patch 1	30/04/13 at 10am-12	Mary Potter Centre
Hyson Green Patch 1	23/05/13 at 10am - 12	Mary Potter Centre
Arboretum Patch 2 Hyson Green	20/06/13 at 1.00pm -3. 14/06/13 at 2.00pm - 3	Mary Potter centre Bridlington Street Area

## Community Meetings

Group	Date	Venue
Police Commissioner BME Advisory group	16/04/13 at 6.30- 8.pm 28/04/13 at 6.30 – 8pm	Mary Potter centre
BOB`s T&R	14/06/13 at 02 – 3.30pm	Bridlington Street
BME Intera Faith meeting	11/04/13 at 6- 9pm	Mount Zion Church
Community partnership Forum	08/04/13 at 6-8pm,08/05/13 at 6-8pm 29/04/13 at 6-8pm, 20/05/13 at 6-8pm	Mary Potter Centre Marcus Garvey Centre

# Community Engagement

## Events Delivered

Event	Lead Partners	Date/Time	Venue
BME Inter Faith meeting	Cinnamon Fund	11/04/13 at 6- 9pm	Mount Zion Church
NCC Commissioning Survey Networking	Community partnership Forum	29/04/13 at 6-8pm, 20/05/13 at 6-8pm	Marcus Garvey Centre

## Future Events and Activities Planned

Event	Lead Partners	Date/Time	Venue
Pride & Family Event	Parks Department	27/07/13 - All day	Arboretum & Forest Rec
Pagan Pride		04/08/13 – All Day	
Bands in the Park	Parks Department	11/08/13 & 18/08/13	Arboretum Rec
Forest Launch Event	Parks Department	31/08/13	Forest Rec

# Finance

## **Ward Councillor Budgets**

Total Amount allocated this period £16,237

Budget Remaining Unallocated £10,137 (inc of 2012-13 allocation)

## **Area Capital Fund**

Total Amount allocated this period £188,813

Budget Remaining Unallocated £176,809 (inc of 2012-13 allocation)

## **Others – Section 106, NCH Environmentals, Other Funding**

£4,292( this period)

# Ward Summary

## Ward Performance Snapshot

Arboretum						
Area	Jul-13 Volume	Jul-12 Volume	Direction of Travel	YTD 13/14 Volume	YTD 12/13 Volume	Directio n of Travel
Crime	124	95	↑	304	387	↓
ASB	86	63	↑	321	328	↓
DV	9	10	↓	34	38	↓
Area	Jun-13 Volume/ Score	Jun-12 Volume/ Score	Direction of Travel	YTD 13/14 Volume/ Average Score	YTD 12/13 Volume/ Average Score	Directio n of Travel
Cleanliness	85	83	↑	267	245	↑
Graffiti	13	24	↓	83	102	↓
Fly tipping	88	38	↑	248	86	↑
Deliberate Fires	7	1	↑	11	2	↑

### Key

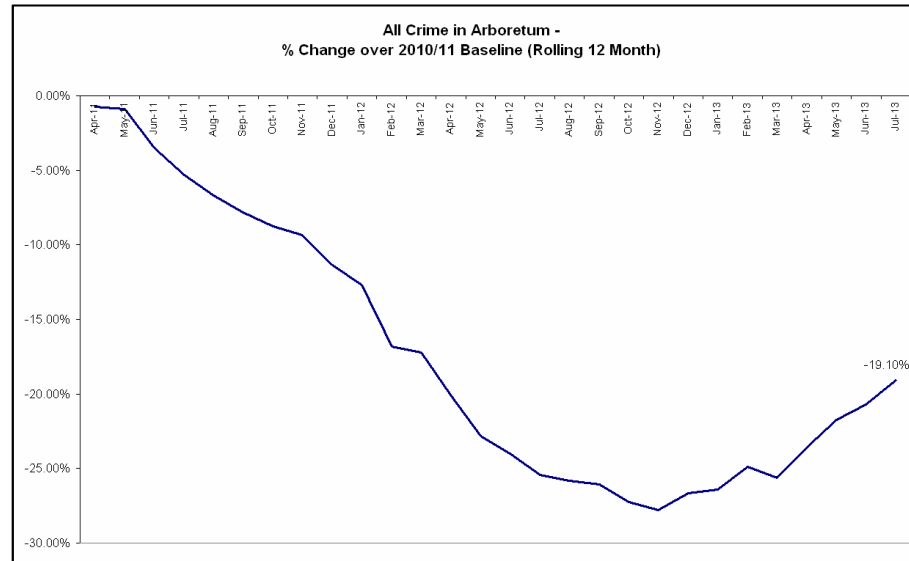
↑	Most recent data shows an <b>increase</b> compared to the corresponding period last year.
↓	Most recent data shows a <b>reduction</b> compared to the corresponding period last year.
↔	Most recent data shows <b>no change</b> compared to the corresponding period last year.

## Ward NAT Details

ARBORETUM WARD						
WARD	NAT Meeting					
Arboretum Ward	Date	Time	Venue	NAT Members (TORs i.e Nom, Ndo, CP Team Leader etc.)		
			Name Of Officer	Email Address		
	30th May	1-3pm	MPC	Linda Wright	<a href="mailto:linda.wright@nottinghamcity.gov.uk">linda.wright@nottinghamcity.gov.uk</a>	
	27th June	1-3pm	MPC	Tony Pap	<a href="mailto:tony.papkiewicz@nottinghamcity.gov.uk">tony.papkiewicz@nottinghamcity.gov.uk</a>	
	1st Aug	1-3pm	MPC	Pete Toye	<a href="mailto:pete.toye@nottinghamcityhomes.org.uk">pete.toye@nottinghamcityhomes.org.uk</a>	
	12th Sept	1-3pm	MPC	Childrens & Families	<a href="mailto:Dene.widdowson@nottinghamcity.gov.uk">Dene.widdowson@nottinghamcity.gov.uk</a>	
	17th Oct	1-3pm	MPC	Sargent Bruce Clarke & Sargent Bruce Rainsford	<a href="mailto:bruce.clarke@nottinghamshire.pnn.police.uk">bruce.clarke@nottinghamshire.pnn.police.uk</a>	
	21st Nov	1-3pm	MPC	SPCO Adam Brown	<a href="mailto:adam.brown@nottinghamshire.pnn.police.uk">adam.brown@nottinghamshire.pnn.police.uk</a>	
	12th Dec	1-3pm	MPC	Esmond Patterson	<a href="mailto:Esmond.patterson@frameworkHA.org">Esmond.patterson@frameworkHA.org</a>	
	16th Jan	1-3pm	MPC	Uzmah Bhatti	<a href="mailto:uzmah.bhatti@nottinghamcity.gov.uk">uzmah.bhatti@nottinghamcity.gov.uk</a>	
	21st Feb	1-3pm	MPC	Guninder Nagi	<a href="mailto:Guninder.Nagi@notts-fire.gov.uk">Guninder.Nagi@notts-fire.gov.uk</a>	
	21st Mar	1-3pm	MPC	Najeeb.Nazir	<a href="mailto:najeeb.nazir@nottinghamcity.gov.uk">najeeb.nazir@nottinghamcity.gov.uk</a>	
				Martin Harris	<a href="mailto:martin.harris@nottinghamcity.gov.uk">martin.harris@nottinghamcity.gov.uk</a>	
				Councillor Bryan	<a href="mailto:Merlita.bryan@nottinghamcity.gov.uk">Merlita.bryan@nottinghamcity.gov.uk</a>	
			Councillor Choudhry	<a href="mailto:Azad.choudhry@nottinghamcity.gov.uk">Azad.choudhry@nottinghamcity.gov.uk</a>		



# Crime



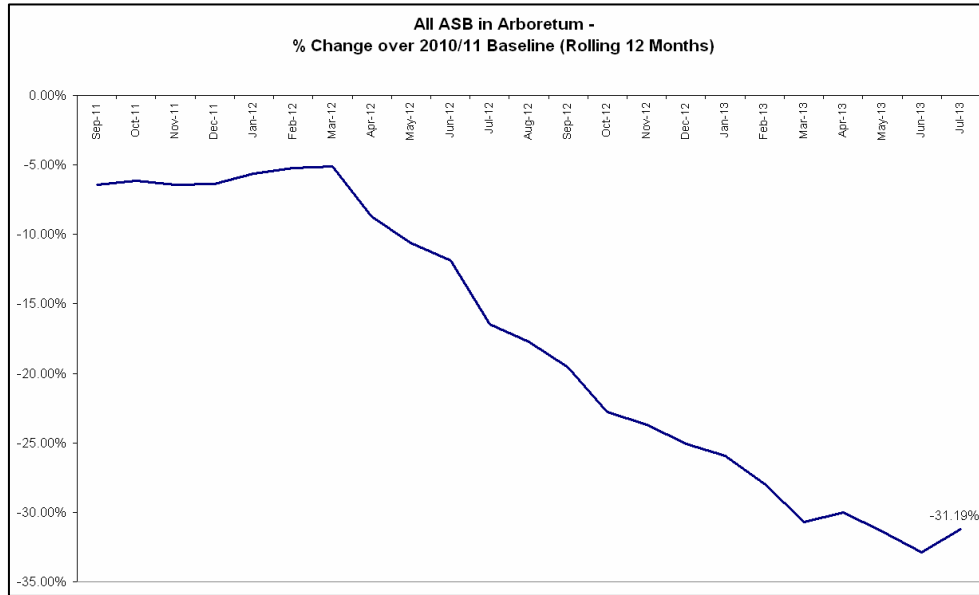
Red*	18 more crimes	17.82%
Amber		
Green		

\*Refers to June 2013 compared to June 2012

- The above baseline graph compares the *rolling* 12 month total of crime in Arboretum to a *fixed* 12 month 2010/11 baseline. The current 12 month total is showing a reduction of 19.10% against the baseline. The level of reduction has been declining since October last year.
- In June 2013 there were 119 crimes which is an increase of 17.82% (18 crimes, see above RAG rating) compared to June 2012. The Division as a whole experienced an increase in all crime of *approximately* +6.4%.
- Year to date crime in the ward has increased by 30.14% (88 crimes, April – June 2013 compared to April – June 2012, see Table 1 on page 5). In the Division as a whole, all crime is up by *approximately* +6.2%.
- The largest volume increases this month were in Drugs, Burglary and Theft offences (see Table 1 on page 5).
- Crimes with a domestic flag assigned to them were down by 1 crime (June 2013 compared to June 2012, see Table 2 on page 5). For June 2013 the ward ranked 12<sup>th</sup> out of the 20 wards in the Division for this type of crime.
- The rate (per 1000 of population) of all crime in Arboretum is the highest across the 20 wards (figures are year to date, see Table 3 on page 6).



# All ASB



Red*
Amber
Green
30 less incidents
-11.32%

\*Refers to June 2013 compared to June 2012

- The above baseline graph compares the *rolling* 12 month total of ASB in Arboretum to a *fixed* 12 month 2010/11 baseline. Performance on this measure continues to improve.
- In June 2013 there were 75 ASB calls in the ward. This is a reduction of -11.32% (-30 calls, see above right RAG rating) compared to June 2012. The Division as a whole experienced a reduction of *approximately* -19% on this measure.
- Year to date ASB in the ward has reduced by -11.32% (-30 calls, April – June 2013 compared to April – June 2012, see Table 5 on page 7). In the Division as a whole, ASB is down by *approximately* -25%.
- The rate (per 1000 of population) of ASB in Arboretum is the 2<sup>nd</sup> highest on the Division (June 2013 figures, see Table 4 on page 7).

# Crime Figures

Table 1: Crime Types by Month and Year to Date

Type	Jun-12	Jun-13	Change	% Change	Prev YTD	YTD	Change	% Change
Autocrime	15	4	-11	-73.33%	27	26	-1	-3.70%
Burglary	6	14	8	133.33%	27	50	23	85.19%
Burglary Other	7	8	1	14.29%	12	15	3	25.00%
Damage	9	16	7	77.78%	42	44	2	4.76%
Drugs	9	18	9	100.00%	27	48	21	77.78%
Fraud	2		-2	-100.00%	6	2	-4	-66.67%
Other	5	2	-3	-60.00%	11	4	-7	-63.64%
Personal Robbery	6	4	-2	-33.33%	13	27	14	107.69%
Robbery Business			0		3		-3	-100.00%
Sexual	3	2	-1	-33.33%	9	8	-1	-11.11%
Theft	16	24	8	50.00%	43	69	26	60.47%
Theft from Person	2	1	-1	-50.00%	9	7	-2	-22.22%
Threats	5	3	-2	-40.00%	14	11	-3	-21.43%
Violence	16	23	7	43.75%	49	69	20	40.82%
<b>Grand Total</b>	<b>101</b>	<b>119</b>	<b>18</b>	<b>17.82%</b>	<b>292</b>	<b>380</b>	<b>88</b>	<b>30.14%</b>

Table 2: Crimes with a Domestic Flag Assigned to them by Month

Ward	Jun-12	Jul-12	Aug-12	Sep-12	Oct-12	Nov-12	Dec-12	Jan-13	Feb-13	Mar-13	Apr-13	May-13	Jun-13	Ward Rank (Jun-13)
ARBORETUM	9	10	11	5	11	9	10	7	9	10	4	13	8	12

# Crime Figures

Table 3: Crime Types by Rate (per 1000 of population) of the 20 Wards – Figures are Year to Date 2013/14

WARD	ALL CRIME	AUTOCRIME	BURGLARY	DAMAGE	PERSONAL ROBBERY	THEFT	THEFT FROM PERSON	VIOLENCE
ARBORETUM	34.10	2.33	4.49	3.95	2.42	6.19	0.63	6.19
ASPLEY	23.27	1.65	1.70	3.69	0.28	3.40	0.17	6.70
BASFORD	17.46	2.41	1.60	3.02	0.19	3.33	0.06	4.07
BERRIDGE	22.14	2.68	1.82	3.16	0.32	5.42	0.59	4.45
BESTWOOD	16.65	1.07	1.31	4.18	0.30	1.97	0.12	4.30
BILBOROUGH	20.13	2.08	1.91	3.69	0.30	2.86	0.00	4.76
BRIDGE	21.94	1.44	0.92	2.15	0.10	8.61	0.51	4.31
BULWELL	26.37	1.86	1.30	5.08	0.68	6.81	0.37	5.20
BULWELL FOREST	18.66	1.32	1.18	2.94	0.73	6.02	0.15	3.31
CLIFTON NORTH	14.59	1.63	1.16	3.49	0.39	2.41	0.08	2.79
CLIFTON SOUTH	14.12	0.79	1.51	2.37	0.22	2.94	0.07	4.09
DALES	19.87	1.40	1.21	3.95	0.18	4.68	0.43	3.77
DUNKIRK & LENTON	26.10	4.85	4.03	2.75	0.37	6.32	0.46	2.84
LEEN VALLEY	18.87	0.65	1.96	3.55	0.37	5.14	0.19	3.64
MAPPERLEY	19.69	2.02	1.77	3.16	0.19	3.98	0.00	3.34
RADFORD & PARK	21.74	3.01	2.76	1.74	0.87	6.23	0.41	2.86
SHERWOOD	22.45	1.82	1.62	1.95	0.71	9.41	0.06	3.57
ST ANNS	22.98	2.15	1.29	3.94	1.58	2.15	0.36	6.01
WOLLATON EAST & LENTON ABBEY	12.76	1.00	1.41	1.41	0.00	4.82	0.00	1.41
WOLLATON WEST	12.21	1.42	1.56	1.63	0.00	3.60	0.20	1.29
<b>WARD AVERAGE</b>	<b>20.30</b>	<b>1.88</b>	<b>1.83</b>	<b>3.09</b>	<b>0.51</b>	<b>4.81</b>	<b>0.24</b>	<b>3.94</b>

	Highest Rate
	Second Highest Rate
	Third Highest Rate

# All ASB Figures

Table 4: All ASB by Rate (per 1000 of population) of the 20 Wards (Figures are June 2013)

WARD	RATE (PER 1000 OF POP.) July 2013
ARBORETUM	7.72
ASPLEY	6.19
BASFORD	5.24
BERRIDGE	6.59
BESTWOOD	5.97
BILBOROUGH	6.01
BRIDGE	7.69
BULWELL	8.42
BULWELL FOREST	4.19
CLIFTON NORTH	4.27
CLIFTON SOUTH	5.74
DALES	5.95
DUNKIRK & LENTON	2.84
LEEN VALLEY	3.46
MAPPERLEY	4.48
RADFORD & PARK	5.05
SHERWOOD	4.41
ST ANNS	8.09
WOLLATON EAST & LENTON ABBEY	1.61
WOLLATON WEST	1.63
<b>WARD AVERAGE</b>	<b>5.47</b>

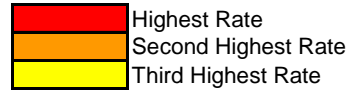
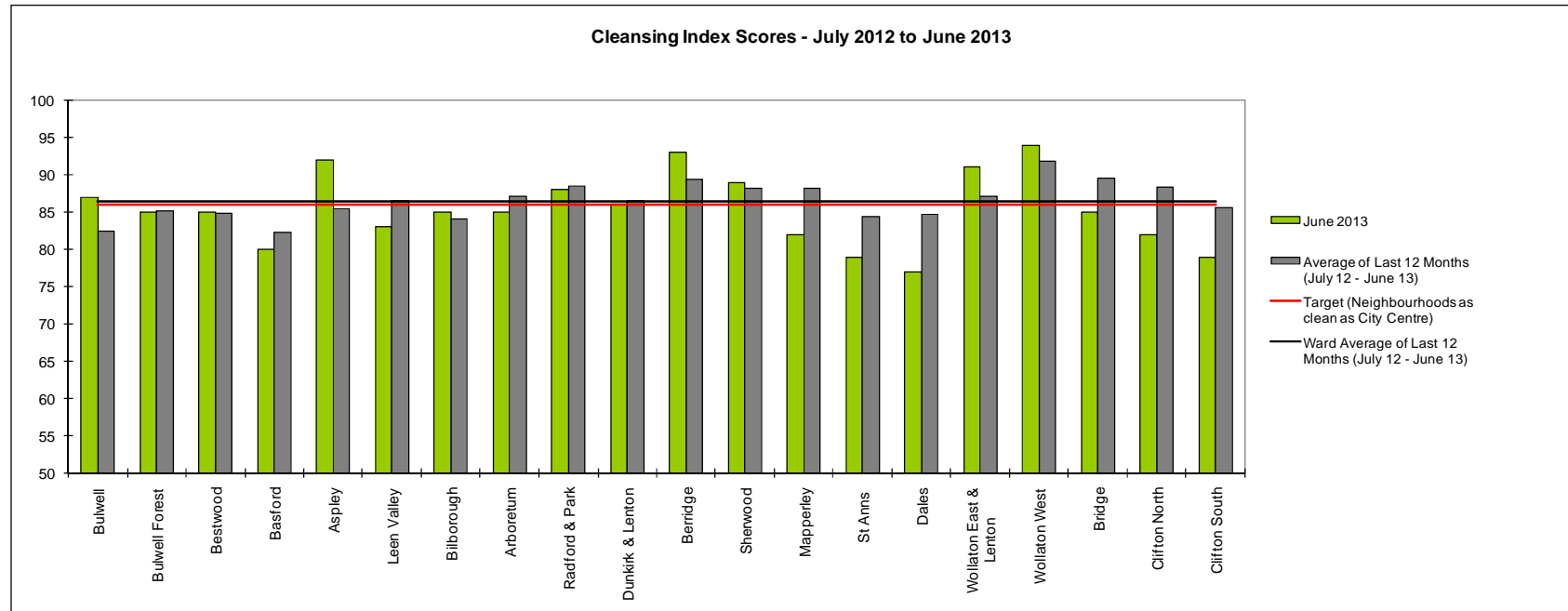


Table 5: All ASB by Month and Year to Date

# Cleanliness Index

This graph shows the position of your ward compared to other Wards



**The “neighbourhood as clean as the city centre” benchmark target on cleanliness is to achieve a score of 86% in every ward. The 86% target is shown in red in the above graph.**

To calculate the Cleanliness Index (CI) an agreed number of transects are surveyed across an area covering a range of land types. Each site surveyed is awarded a cleanliness grade based on a 7 point scale from A to D where Grade A: – no litter, and Grade D: - heavily littered. The maximum possible score of 100 is achieved when all sites achieve Grade A.

The Code of Practice for Litter and Refuse (COPLAR) requires councils to strive to reach an ‘acceptable’ standard of cleanliness (grade B or better) across the Council area. Grade A is the ultimate goal and is how a site should be immediately after sweeping but is almost impossible to maintain for any length of time. For example, a grade A site is completely free of litter – one cigarette butt takes it down to B+.

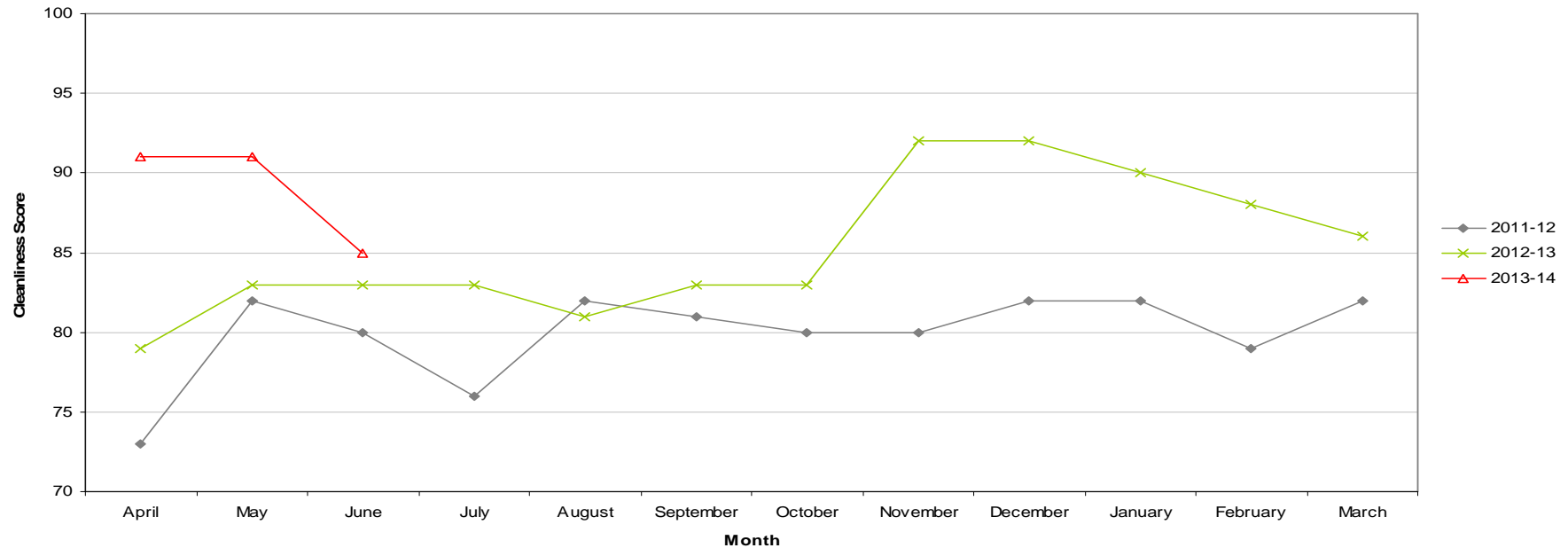
To achieve the manifesto commitment of Neighbourhoods as clean as the City Centre a target of 86 is required as that was the CI for the City Centre in May 2011. To give some context if all areas surveyed achieved a grade ‘B’ standard, this would equate to a cleanliness index of 67.

# Cleanliness Index

Cleanliness Index Score	<b>85</b>
Performance compared to previous year	↗
Performance compared to neighbourhoods target of 86	↘

- All data refers to a comparison with the previous year's month
- It is proposed that performance over time graphs be used for each indicator
- Historic data for comparison is not available for dog fouling

Cleanliness Index - Arboretum

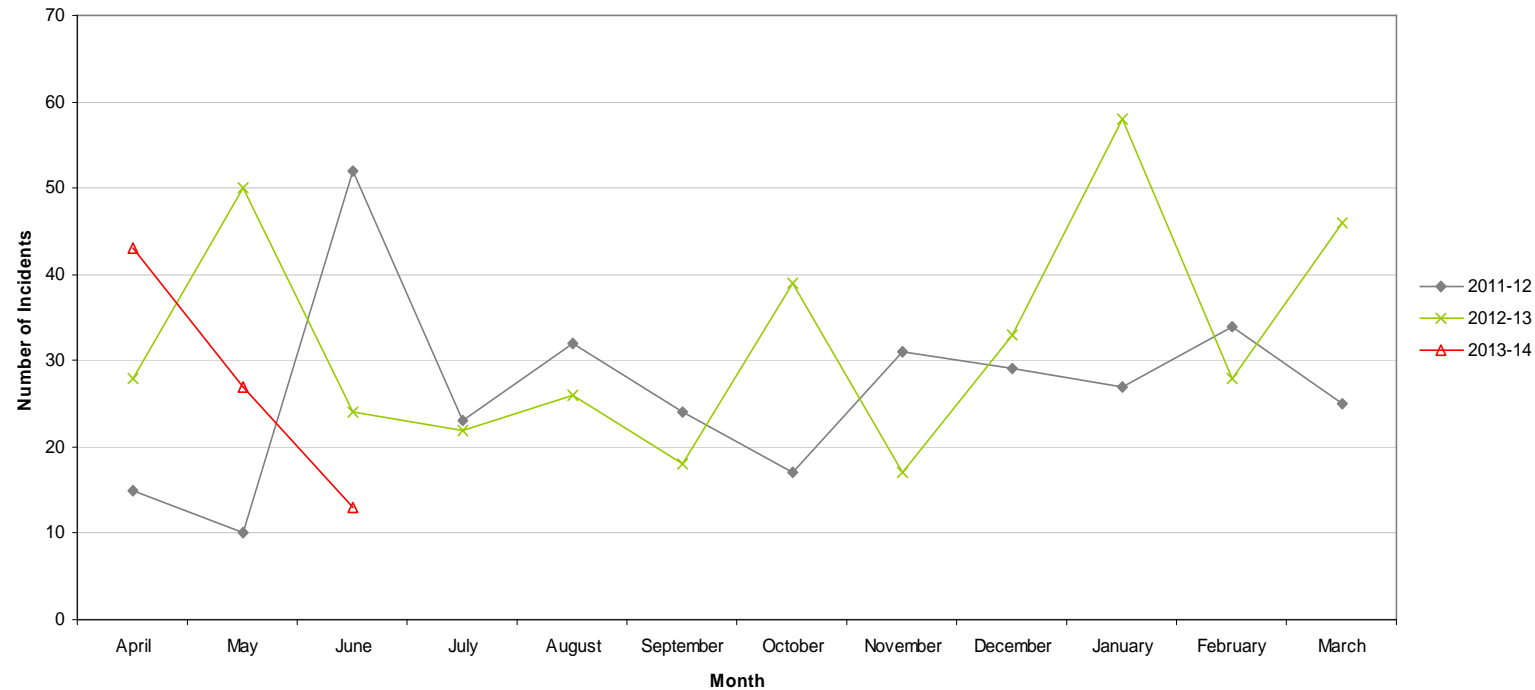


# Graffiti Reports

<b>RED</b>		
<b>AMBER</b>		
<b>GREEN</b>	<b>13 incidents</b>	<b>Decrease of 11</b>

- All data refers to a comparison with the previous year's month
- It is proposed that performance over time graphs be used for each indicator
- Historic data for comparison is not available for dog fouling

Incidents of Graffiti - Arboretum



CPOs across the City have been asked to report everything they came across regardless of size. This they did and the level of work increased considerably. As CPOs have no direct input to Confirm they had been asked to send all reports to the ASB line and they then input into Confirm. Inputting is done on a random basis which means time is spent reworking jobs into a manageable order.

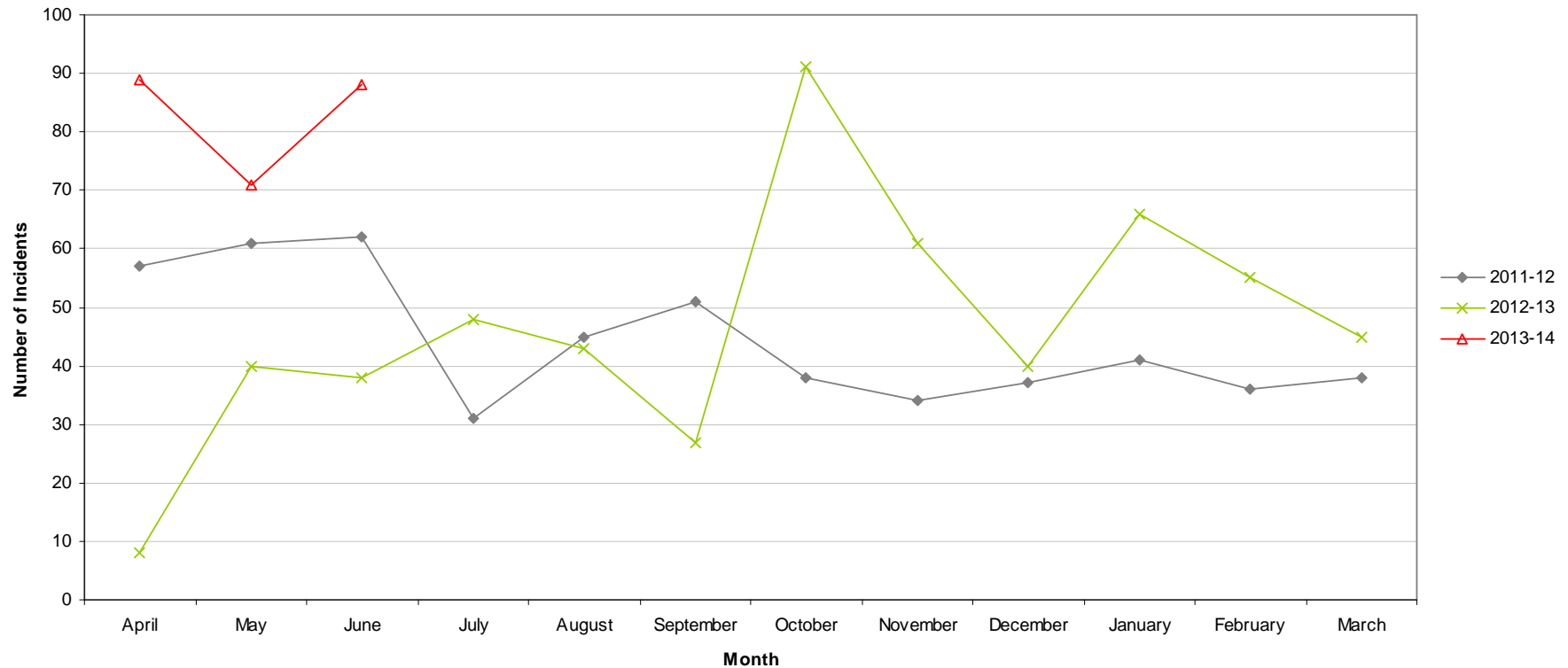


# Fly Tipping

<b>RED</b>	<b>88 incidents</b>	<b>Increase of 50</b>
<b>AMBER</b>		
<b>GREEN</b>		

- All data refers to a comparison with the previous year's month
- It is proposed that performance over time graphs be used for each indicator
- Historic data for comparison is not available for dog fouling

Incidents of Fly Tipping - Arboretum



# Unemployment Rate

Area	Jun-13			Change in last month		Change in last year	
	Number	Rate	City Rank	Number	%	Number	%
Arboretum	803	6.8	8	-35	-4.2	-47	-5.5
Berridge	1,015	7	6	-26	-2.5	-78	-7.1
Dunkirk and Lenton	214	2	19	-15	-6.6	-65	-23.3
Radford and Park	748	4	17	-12	-1.6	-43	-5.4
Sherwood	514	4.8	13	-32	-5.9	-66	-11.4
Wollaton East and Lenton Abbey	136	1.4	20	-14	-9.3	-7	-4.9
Wollaton West	207	2.3	18	-23	-10	-34	-14.1
Aspley	1,153	10.2	1	-51	-4.2	-56	-4.6
Basford	718	6.5	9	-4	-0.6	-3	-0.4
Bestwood	926	8.2	4	-84	-8.3	-85	-8.4
Bilborough	742	7.1	5	-32	-4.1	-59	-7.4
Bulwell	1,048	9.6	2	-28	-2.6	-23	-2.1
Bulwell Forest	421	4.6	14	-22	-5	-43	-9.3
Leen Valley	315	4.5	16	-18	-5.4	-33	-9.5
Bridge	641	6.1	10	-29	-4.3	-106	-14.2
Clifton North	408	4.6	14	-6	-1.4	19	4.9
Clifton South	482	5.5	12	-16	-3.2	-20	-4
Dales	814	7	6	-64	-7.3	-61	-7
Mapperley	635	5.7	11	-57	-8.2	-95	-13
St Ann's	1,205	8.8	3	-54	-4.3	-38	-3.1

*This is an edited version of a report produced by: Geoff Oxendale, Information and Research Officer, Nottingham City Council. Claimant count of Job Seekers Allowance (JSA) is used as a proxy measure for unemployment.*

*Wards are ranked from 1 (highest Rate, per 1000 of population, of JSA claimants) to 20 (lowest Rate).*

# Housing

## Arboretum Ward - Housing



### Anti-social behaviour - Hyson Green (Arboretum Ward)

Indicator	Current Target	2010/11	2011/12	2012/13		
		Value	Value	Value	Status	Trend
% of ASB cases resolved - Hyson Green	97.6%	100%	97.53%	100%		
% of ASB cases resolved by first intervention - Hyson Green	75%	-	-	78.92%		n/a

### Empty properties - Arboretum Ward

Indicator	Current Target	2010/11	2011/12	2012/13		
		Value	Value	Value	Status	Trend
Average void re-let time for Arboretum Ward (calendar days)	26	19.69	24.28	25.82		
Number of lettable voids Arboretum Ward	-	5	9	5		
Number of empty properties awaiting decommission in Arboretum Ward	-	72	56	56		

### Estate star ratings (from Tenant Service Inspectors)

Indicator	2010/11		2011/12		2012/13		
	Value	Status	Value	Status	Value	Status	Trend
Estate star rating - Arboretum	2 Star		3 Star		3 Star		

# Housing

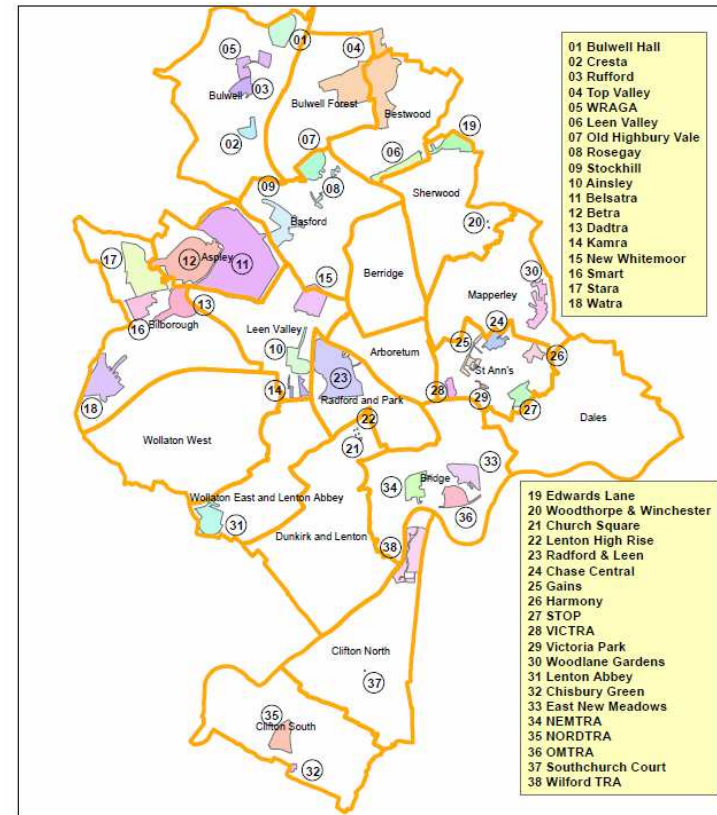
## Rent Collection - Hyson Green

Indicator	Current Target	2010/11	2011/12	2012/13		
		Value	Value	Value	Status	Trend
Rent charged that has been collected - Hyson Green	100.2%	100.7%	101.2%	100.5%	✔	↑

### Key:

- ✔ Performance on or exceeding target
- Performance below target
- 📊 Data only performance indicator
- ↑ Performance has improved compared to two years ago
- ↓ Performance has deteriorated compared to two years ago
- ▬ Performance unchanged

Map of Tenants and Residents Associations by Ward



Data prepared by Nottingham City Homes Performance Team

For more information please contact Tricia Quinn, Performance Review Manager on 0115 9157365 or Marcus Parton, Performance Review Officer 0115 915715

# Housing

## Performance indicator definitions

Performance indicator	Definition
% of ASB cases resolved	This performance indicator monitors the proportion of ASB cases that Nottingham City Homes has successfully resolved. Data for this indicator is not available by ward and is reported by Housing Office.
% of ASB cases resolved by first intervention	This performance indicator monitors how many ASB cases Nottingham City Homes resolved on the first intervention e.g. written warning. Data for this indicator is not available by ward and is reported by Housing Office.
Average void re-let time (calendar days)	This performance indicator monitors how many empty properties Nottingham City Homes has re-let and the length of time it has taken. The void period is the number of calendar days including the day after the old tenancy ends right through to and including the day before the new tenancy starts.
Number of lettable voids	This performance indicator monitors the number of empty properties which are available for re-letting. Lettable empty properties are those which will receive repair work and then be let to a new tenant.
Number of empty properties awaiting decommission	This performance indicator monitors the number of empty properties which will not be re-let and includes those being decommissioned and / or demolished.
Estate star ratings	Nottingham City Homes Tenant Inspectors monitor the condition of estates and rates them according to a zero, one, two and three star standard. The estates are monitored every three months with a selection of streets (determined by tenants) covering all 42 estates.
Rent charged that has been collected	This performance indicator measures the amount of rent collected (including tenant arrears) as a percentage of rent due for the current year. Data for this indicator is not available by ward and is reported by Housing Office.

# Community Protection

*Data has been received from Community Protection and where postcodes have been listed these have been geo-coded and mapped to determine the Ward. All addresses relate to the address of the Perpetrator.*

*FPNs are not currently available at ward level.*

**In June 2013 the following orders were issued:**

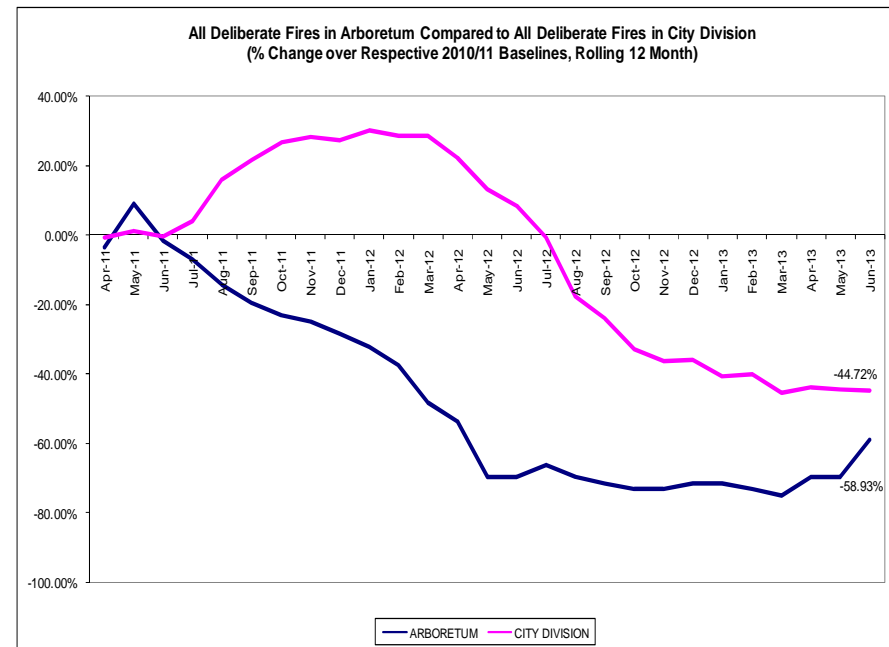
- **4 Statutory Notices and 1 Works in Default for Environmental issues**

*For enquiries regarding Community Protection court outcomes please contact the Operational Manager for the locality.*

# Fire

Table: Volume of Deliberate Primary and Secondary Fires by Ward

Ward	Jun-12	Jun-13	Change	% Change	Previous YTD	YTD	Change	% Change
Arboretum	1	7	6	600.00%	2	11	9	450.00%
Aspley	8	4	-4	-50.00%	15	15	0	0.00%
Basford	4	5	1	25.00%	15	10	-5	-33.33%
Berridge	3	4	1	33.33%	11	12	1	9.09%
Bestwood		4	4		9	18	9	100.00%
Bilborough	1	2	1	100.00%	20	5	-15	-75.00%
Bridge	1	1	-1	-100.00%	3	5	2	66.67%
Bulwell	8	4	-4	-50.00%	23	18	-5	-21.74%
Bulwell Forest	4		-4	-100.00%	10	4	-6	-60.00%
Clifton North	1		-1	-100.00%	3	4	1	33.33%
Clifton South	1	1	0	0.00%	4	9	5	125.00%
Dales	2	3	1	50.00%	3	8	5	166.67%
Dunkirk and Lenton	1		-1	-100.00%	1	1	0	0.00%
Leen Valley	4	3	-1	-25.00%	11	10	-1	-9.09%
Mapperley	3		-3	-100.00%	6	5	-1	-16.67%
Radford and Park	1	1	0	0.00%	3	2	-1	-33.33%
Sherwood	1	2	1	100.00%	2	2	0	0.00%
St. Ann's		2	2		5	13	8	160.00%
Wollaton East and Lenton Abbey	1	1	0	0.00%	2	3	1	50.00%
Wollaton West	1		-1	-100.00%	1	2	1	100.00%
<b>Total</b>	<b>46</b>	<b>43</b>	<b>-3</b>	<b>-6.52%</b>	<b>149</b>	<b>157</b>	<b>8</b>	<b>5.37%</b>



- The above table shows volume of deliberate (primary and secondary) fires in the 20 wards. In June 2013 there were 7 fires in Arboretum. These included 3 primary fires (1 flat, 1 hostel, 1 car) and 4 secondary fires, all in wheelie bins. Year to date deliberate fires in Arboretum have increased from 2 to 11 compared to the corresponding period last year.
- The graph on the right shows a *rolling* 12 month total of deliberate fires in Arboretum against the *fixed* 2010/11 baseline. The performance of the City Division against *its* baseline has also been shown for comparison purposes.

Note: Where ward boundaries overlap with the City Centre fires that occurred in the City Centre have been **included** in the ward figures.



# Methodology

Data has not been audited or verified and therefore must only be used as a reflection of crime.

Crime data and ASB calls have been extracted from the Police systems and mapped to ascertain which Ward they occurred in.

Where a ward boundary overlaps with the City Centre, crime data and ASB calls relating to the City Centre have been removed.

Where possible the most recent data is used, although for some areas this may be a month further in arrears.

Discussions continue with other agencies regarding what further data can be included.